

WÖHLER

VIS2000

Video Inspection System 'Seeing is believing'

The VIS2000 is an exceptionally versatile video inspection system. It brings together a unique blend of technology, portability, ease-of-use and affordability. It is light, yet rugged, and with internal rechargeable batteries, you get unmatched portability with a hand-held "go anywhere" attitude. Horizontal or vertical, elbows or bends, top-down or bottom-up, the VIS2000 has it covered.

APPLICATIONS

- chimneys
- vents
- power plants
- quality control
- pest control
- search & rescue...and much more
- ducts
- water & sewer pipes
- construction
- home inspection
- security & surveillance



NEW!



The Wöhler PRO DC monitor – Digital Capture made easy. Direct capture and storage of digital video and images direct onto an integrated Compact Flash card. Nothing Faster – Nothing Easier.



The New Standard VIS 2000 monitor – Bright, high resolution TFT LCD screen, video-in and out sockets, removable, rechargeable 12V battery and handy, rear swivel cable connector.

Specifications:

PRO DC Monitor:

weight:	no. 6841
dimensions:	2.8 lb (1.3 kg)
screen size:	10.5"L x 7.8"H x 2.4"W (27x20x6cm)
resolution:	6.5" diagonal TFT-LCD
	768 x 512 pixel NTSC
	640 x 480 pixel PAL
CF-card:	128 MB, 1GB max. (.jpg & . mov file formats)
video-out:	1V analog composite
batteries:	7.2V NiMH

Standard Monitor:

weight:	no. 7850
dimensions:	2.8 lb (1.3 kg)
screen size:	6.5"L x 5.1"H x 2.3"W (16.5x12.7x5.8cm)
resolution:	5.6" diagonal
video-out:	960 x 234 pixel TFT-LCD
batteries:	1V analog composite
	12V NiMH

Pan & Tilt camera – color / b&w:

weight:	no. 7853 / 7805
dimensions:	8.5 oz. (240 g)
device:	Ø 2", 3.9"L (Ø 51mm, 100 mm L)
sensitivity:	¼ " CCD NTSC
sensor resolution:	0.4 lux color / 0.08 lux b&w
focal length:	542 x 586 pixel / 537 x 505 pixel
FOV:	2.0 mm
lighting:	98° x 75°
	4 bulbs + 6 LED hi beam (color)
	4 bulbs + 6 LED infra red hi beam (b&w)

Mini camera – color / b&w:

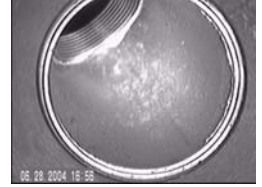
waterproof:	no. 6817 / 7924
weight:	3 bar
dimensions:	2.1 oz. (60 g)
device:	Ø 1", 3.5"L (Ø 26mm, 90 mm L)
sensitivity:	1/3 " CMOS NTSC
sensor resolution:	3 lux color / 0.2 lux b&w
focal length:	510 x 492 pixel
FOV:	2.5 mm
lighting:	120°
	12 LED / 12 LED red

Cable and Rod options:

soft video cable:	6.6' / 2m, 33' / 10m, 65' / 20m, 100' / 30m, 165' / 50m
6mm video rod:	16' / 5m, 65' / 20m, 100' / 30m
7mm video rod:	16' / 5m, 65' / 20m, 100' / 30m
gooseneck:	39" / 99 cm with 41" / 104 cm connector cable

Images:

Inside a 2" pipe looking at an elbow with the 1" b&w mini camera



Inspecting a weld in a 2" pipe with the 1" color mini camera and the optional 90° mirror



View of a joint in a 4" dryer vent using the 2' Pan & Tilt camera



Image of a faulty liner in a chimney using the 2" P&T camera



Accessories:

- ✓ 90° mirror for mini camera
- ✓ Extra light ring for 2" camera (16 LEDs)
- ✓ Camera roller for 2" camera in 4" pipes and up
- ✓ Camera trolleys for 2" camera in larger pipes
- ✓ Cable reel and monitor stand for up to 100' of video cable
- ✓ Light, hand-held reel for 6/7mm video rod
- ✓ Camera holder for vertical inspections
- ✓ Pan & Tilt controller for use with your own monitor
- ✓ Brushes for centering camera in pipes and chimneys
- ✓ Leather case with sun visor for monitor
- ✓ Carry cases in various sizes
- ✓ Auto charger plug
- ✓ Sun visor for monitor
- ✓ Continuous 50 to 165 ft' fiberglass push rod in a reel for vertical or horizontal applications
- ✓ Distance measurement standard with rod or cable reels
- ✓ Optional sonde locator for identifying camera position behind walls and inside pipes

Wöhler USA

1933 Evans Road, Cary, NC., 27513 Phone: 919-678-9808, email: info@wohlerusa.com, web: www.wohlerusa.com